

vPad-ESU™

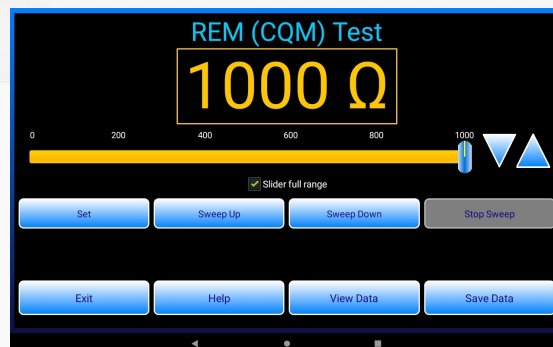
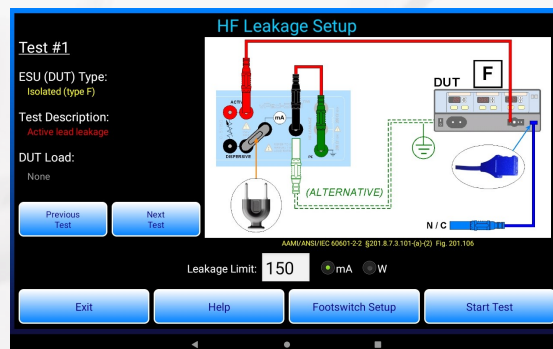
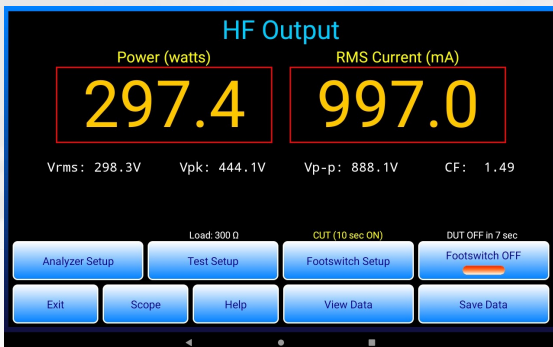
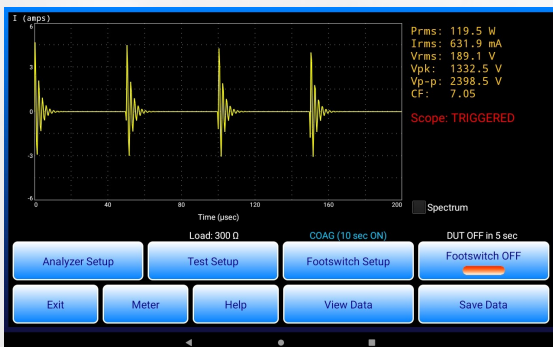
ESU Analyzer

vPad-ESU - the smallest full featured analyzer for testing Electrosurgical Units (ESUs). Built on the Vision Pad platform, vPad-ESU has everything you have come to expect from the technological leader in biomedical test equipment.

Key Features:

- Digital signal processor (DSP) enables accurate testing of all ESU makes and models, continuous, cut, coag, monopolar, bipolar
- Integration of ESU testing with HF digital storage oscilloscope and spectrum analyzer functions provides three pieces of test equipment in one
- High powered RF load provides settings required for all IEC 60601-2-2 tests, including Covidien ForceTriad maintenance procedures
- Wide measurement range - up to 8.5A
- Pre-Configured automated PM routines for most major manufacturers
- Works with vPad safety analyzers and automation apps.

Innovation by design



vPad-ESU™ - Technical Specifications

HF Power (RMS):
 Range 0 - 999.9 W (as derived from HF current)
 Accuracy ±(3% of reading + ½W)

HF Current (RMS):
 Range 0 - 8.5 A
 Accuracy ±(1% of reading + 5mA)

Voltage (RMS):
 Range 0 - 999.9 V (as derived from HF current)
 Accuracy ±(1% of reading + 1V)

Voltage (Peak):
 Range 0 - 9999 V
 Accuracy ±(1% of reading + 10V)

Crest Factor: 1.0 - 999.9 (as derived from peak/RMS ratio)

Instrument RF Bandwidth (-3dB): 250 Hz - 12 MHz

Isolation, PE to MD: 10 kV

HF Load:
 Range
 Internal Variable 0 - 5115 Ω
 Internal + External Max 30,000 Ω

Resolution (Internal) 5 Ω
 Accuracy ± 1% +0.5, -0 Ω
 Power, 50% duty cycle
 200W @ 5 Ω
 400W @ 10 Ω
 600W @ 20 Ω
 600W @ 40 Ω
 600W @ 80 Ω
 600W @ 160 Ω
 600W @ 320 Ω
 600W @ 640 Ω
 530W @ 1280 Ω
 260W @ 2560 Ω

RF Leakage Load:
 Resistance 2 x 200 Ω
 Accuracy ± 1%
 Power, 100% duty 16 W

REM/CQM Test Resistance:
 Range 0 - 1023 Ω
 Resolution 1 Ω
 Accuracy ± 1% +1, -0 Ω

Operational Duty Cycle:
 Up to 100% in manually activated tests, 50% in automated footswitch activation, from 1 to 20 seconds

HF Digital Oscilloscope:
 Vertical Ranges 0.125, 0.25, 0.75, 1.5, or 3 A / division
 Vertical Range Selection Manual or Automatic
 Horizontal Ranges 1.25, 2.5, 5, 10, 20 or 40 µsec / division
 Trigger Level Adjustable, +/- edge

HF Spectrum Analyzer:
 Vertical Ranges Normalized dB or linear
 Horizontal Ranges 62.5, 125, 250, 500, 1000, 2000 kHz / division
 Frequency Resolution 1.22, 2.44, 4.88, 9.77, 19.5, 39.1 kHz

User Interface:
 Android 10" Tablet providing Graphical User Interface, Wi-Fi & Bluetooth communication, 12 GB memory (or more – optional)

Power:
 120 Volt power outlet 90 to 132 V ac rms, 47 to 63 Hz, 0.6 A max.
 230 Volt power outlet 180 to 264 V ac rms, 47 to 63 Hz, 0.4 A max.

Size: 8.5 x 11 x 13 in.

Weight: 18 lb.

Environment:
 59°F to 104°F, 10% to 90% RH,
 Indoor Use Only, Category II



All specifications subject to change without notice.



130 - 4020 Viking Way, Richmond, BC, Canada V6V 2L4
 Phone: +1.604.291.7747 Fax: +1.604.294.2355
 Toll-Free (North America): 800.667.6557

©Datrend Systems Inc. April 2024